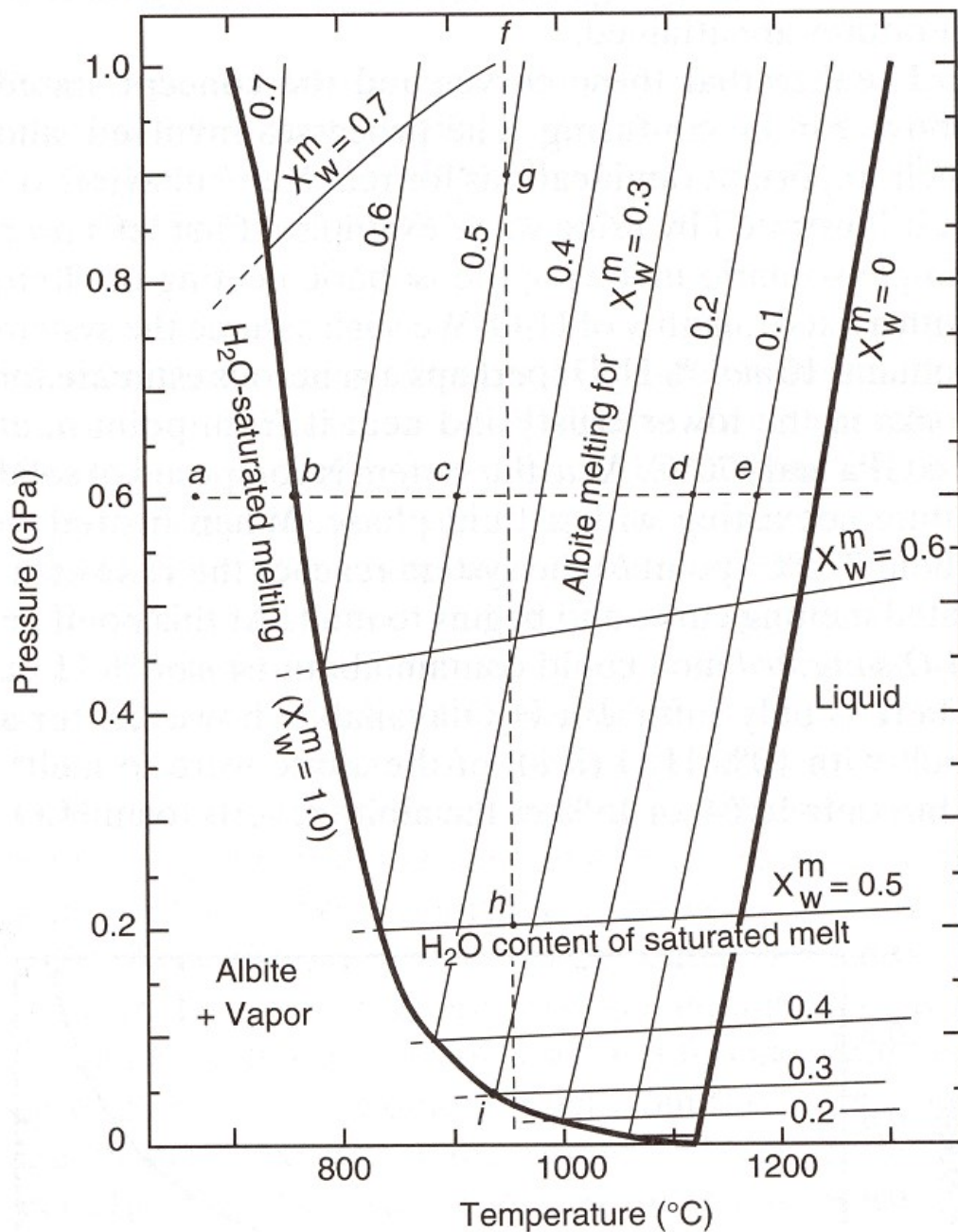


### Melting Relationships in the System Albite-H<sub>2</sub>O

Using the attached diagram Figure 7-22, prepare a graph similar to figure 7-23 (Winter, p. 130) showing the %Melt versus the temperature in °C. Assume an initial position of 700°C, 0.8 GPa, with a rock containing 6 mol percent water. The graph may be drawn by hand or plotted on using computer software. Then answer the following questions.

1. At what temperature does the first melt appear? \_\_\_\_\_
2. Using the graph you prepared, estimate the temperature at which the following percent of melt are achieved.

% Melt	Temperature
25	_____
50	_____
75	_____
100	_____



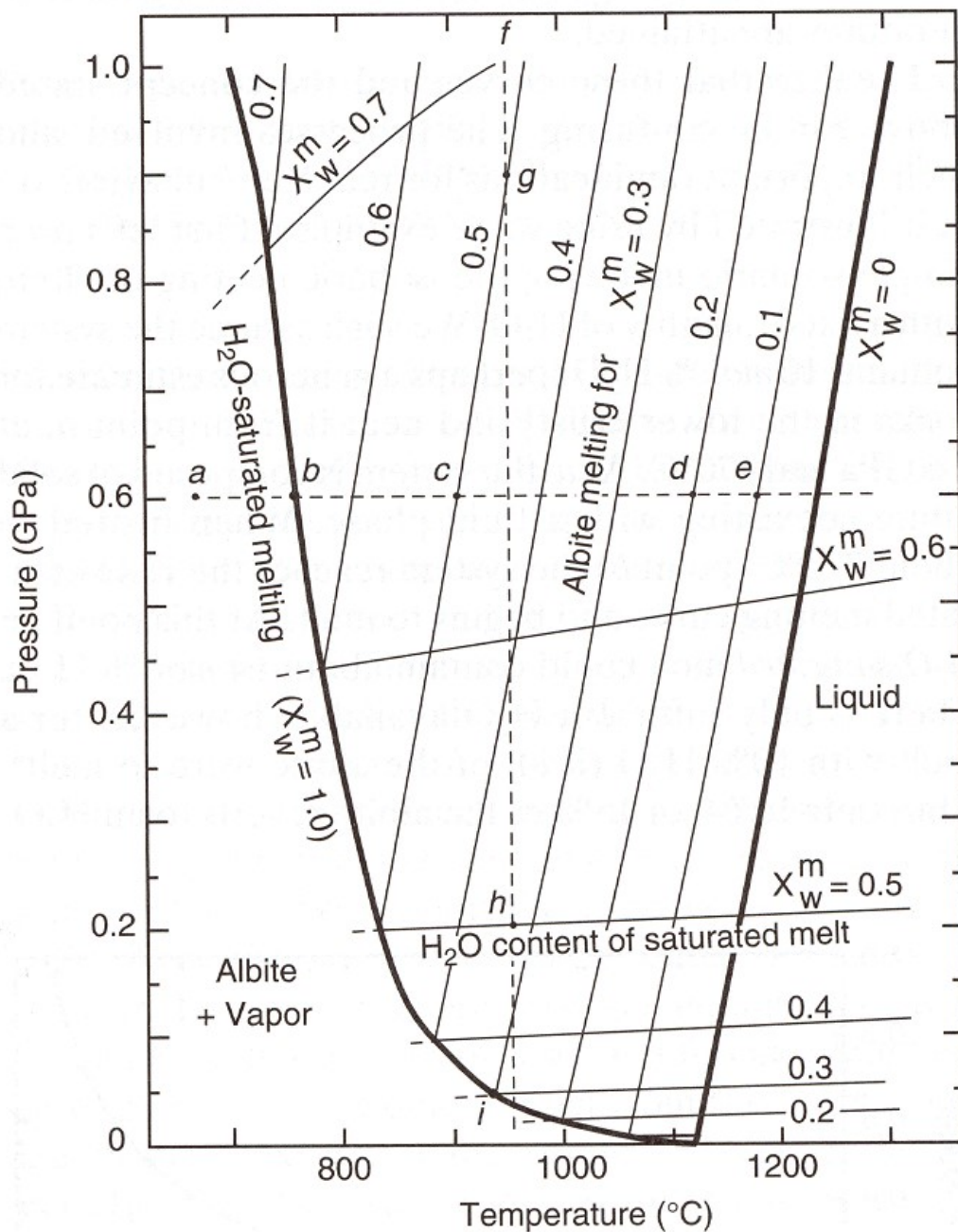
**Figure 7-22** Pressure-temperature projection of the melting relationships in the system albite-H<sub>2</sub>O. From Burnham and Davis (1974). Reprinted by permission of the American Journal of Science.

### Melting Relationships in the System Albite-H<sub>2</sub>O

Using the attached diagram Figure 7-22, prepare a graph similar to figure 7-23 (Winter, p. 130) showing the %Melt versus the temperature in °C. Assume an initial position of 700°C, 0.8 GPa, with a rock containing 6 mol percent water. The graph may be drawn by hand or plotted on using computer software. Then answer the following questions.

1. At what temperature does the first melt appear? \_\_\_\_\_
2. Using the graph you prepared, estimate the temperature at which the following percent of melt are achieved.

% Melt	Temperature
25	_____
50	_____
75	_____
100	_____



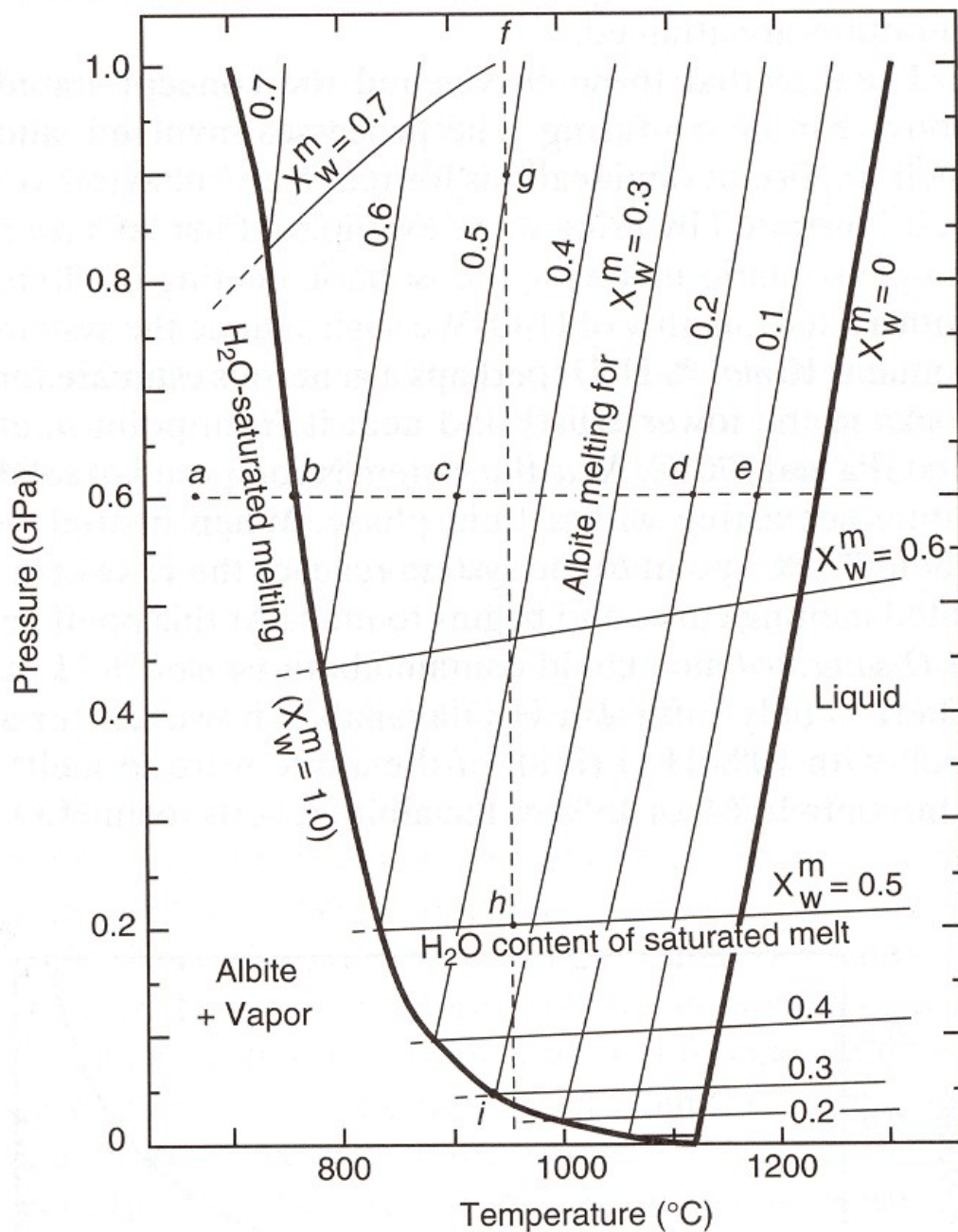
**Figure 7-22** Pressure-temperature projection of the melting relationships in the system albite-H<sub>2</sub>O. From Burnham and Davis (1974). Reprinted by permission of the American Journal of Science.

### Melting Relationships in the System Albite-H<sub>2</sub>O

Using the attached diagram Figure 7-22, prepare a graph similar to figure 7-23 (Winter, p. 130) showing the %Melt versus the temperature in °C. Assume an initial position of 700°C, 0.8 GPa, with a rock containing 6 mol percent water. The graph may be drawn by hand or plotted on using computer software. Then answer the following questions.

1. At what temperature does the first melt appear? \_\_\_\_\_
2. Using the graph you prepared, estimate the temperature at which the following percent of melt are achieved.

% Melt	Temperature
25	_____
50	_____
75	_____
100	_____



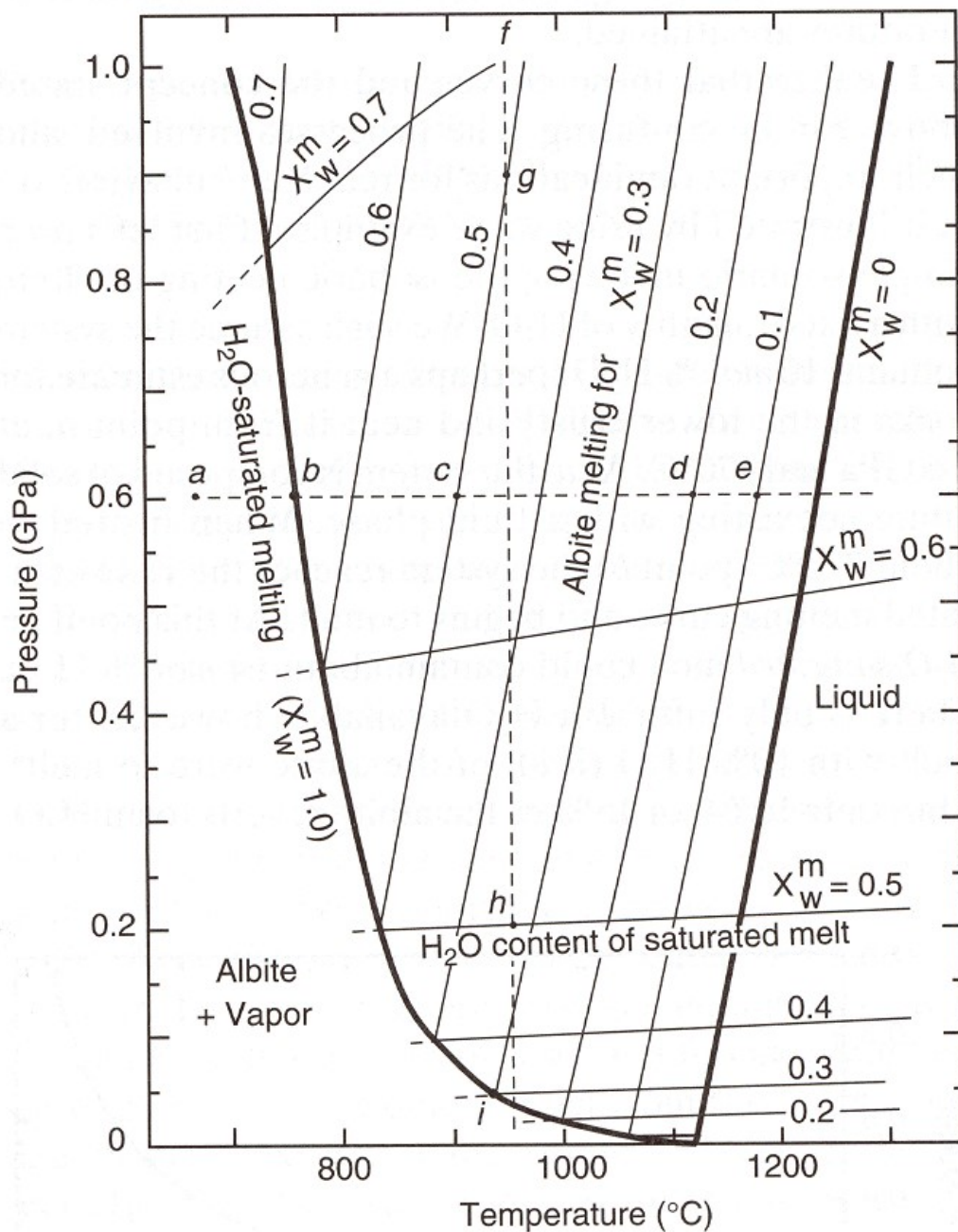
**Figure 7-22** Pressure-temperature projection of the melting relationships in the system albite-H<sub>2</sub>O. From Burnham and Davis (1974). Reprinted by permission of the American Journal of Science.

### Melting Relationships in the System Albite-H<sub>2</sub>O

Using the attached diagram Figure 7-22, prepare a graph similar to figure 7-23 (Winter, p. 130) showing the %Melt versus the temperature in °C. Assume an initial position of 700°C, 0.8 GPa, with a rock containing 6 mol percent water. The graph may be drawn by hand or plotted on using computer software. Then answer the following questions.

1. At what temperature does the first melt appear? \_\_\_\_\_
2. Using the graph you prepared, estimate the temperature at which the following percent of melt are achieved.

% Melt	Temperature
25	_____
50	_____
75	_____
100	_____



**Figure 7-22** Pressure-temperature projection of the melting relationships in the system albite-H<sub>2</sub>O. From Burnham and Davis (1974). Reprinted by permission of the American Journal of Science.

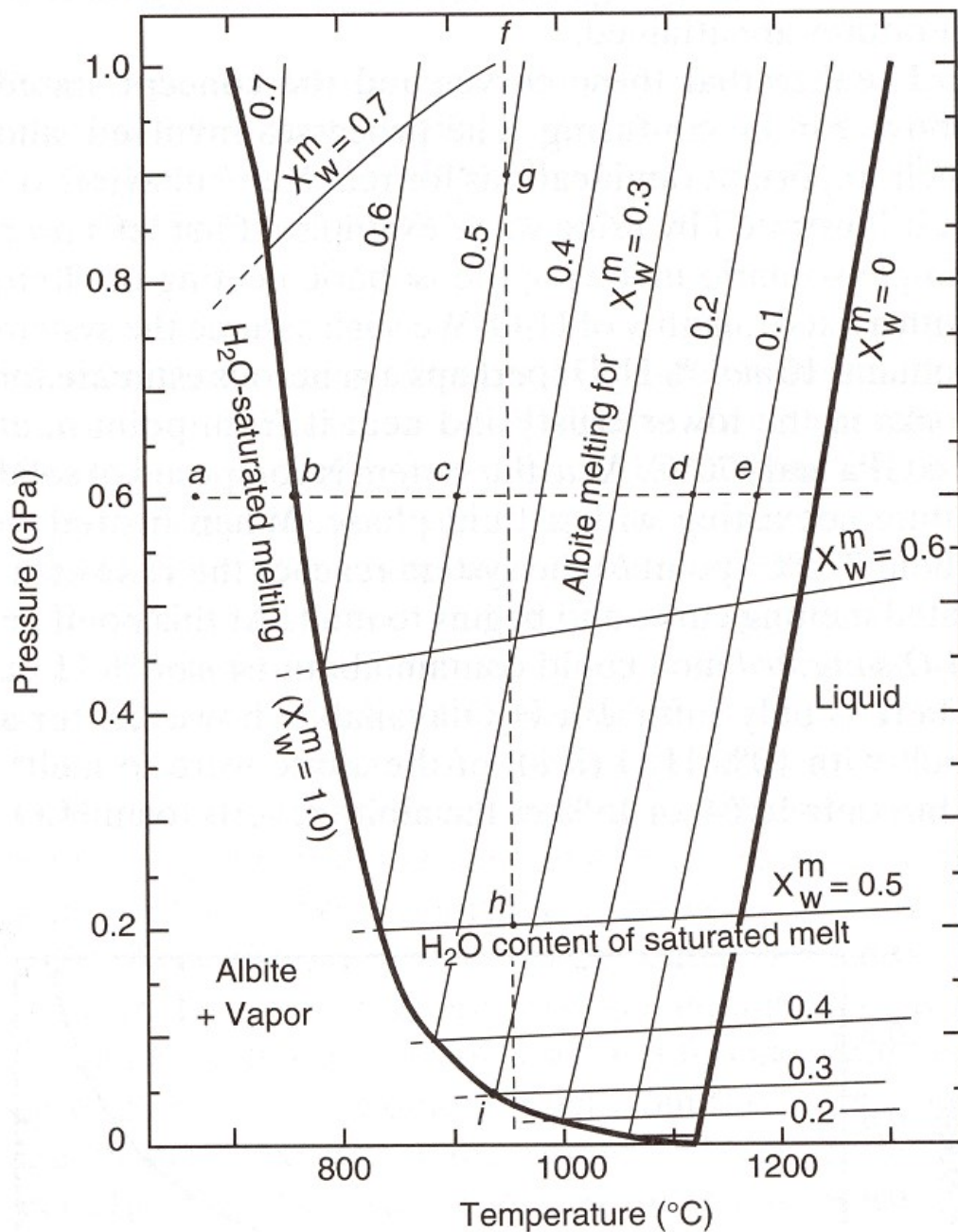


### Melting Relationships in the System Albite-H<sub>2</sub>O

Using the attached diagram Figure 7-22, prepare a graph similar to figure 7-23 (Winter, p. 130) showing the %Melt versus the temperature in °C. Assume an initial position of 700°C, 0.8 GPa, with a rock containing 6 mol percent water. The graph may be drawn by hand or plotted on using computer software. Then answer the following questions.

1. At what temperature does the first melt appear? \_\_\_\_\_
2. Using the graph you prepared, estimate the temperature at which the following percent of melt are achieved.

% Melt	Temperature
25	_____
50	_____
75	_____
100	_____



**Figure 7-22** Pressure-temperature projection of the melting relationships in the system albite-H<sub>2</sub>O. From Burnham and Davis (1974). Reprinted by permission of the American Journal of Science.